

DATA SHEET

MODULETEK: 400G MPO jumper

Introduction

400G MPO fiber jumper is used for QSFP DD/OSFP-400G-DR4, QSFP DD/OSFP-400G-SR8, QSFP DD/ OSFP-400G-SR4.2, QSFP DD/OSFP-400G-Bidi4.2 and other module connections. Moduletek provides customized 400G MPO jumpers that are 100% tested for optimum performance and reliability.

Product Features

Polarity: Type B

Ultra-low insertion loss

Optional fiber cores: 8,12,16,24

MPO connector type: female

Optional fiber type: SM(G652D); MM(OM3,OM4)

Cable Sheath Type: LSZH

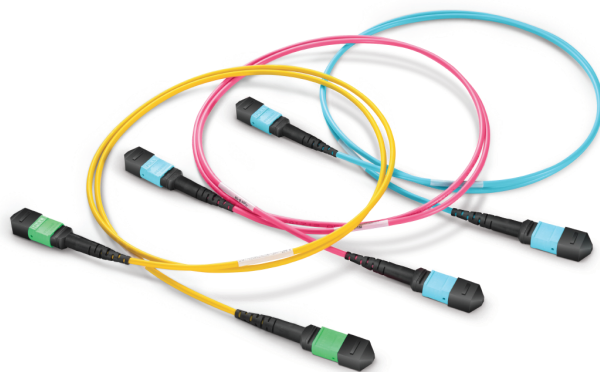
Optional connector types: MPO,APC、 PC/UPC polished

Cable length: 1 to 999 meters

Improve and simplify fiber routing and reduce fiber management space

Applications

- Data Center Interconnect
- High-Density Cross Connect
- Backbone Installations
- Telecommunication Networks
- Broadband/CATV Networks
- Test Labs
- LAN/WAN



Ordering Information

Part Number	Description	Applicable 400G module model
MPO/APC-MPO/APC-F-B-0-8-3.0-G652D-LSZH-aM-MIC-00	8-core MPO(female)single-mode G652D trunk fiber jumper,polarity B,LSZH,yellow	QSFP DD/ OSFP-400G-DR4
MPO/APC-MPO/APC-F-B-0-12-3.0-G652D-LSZH-aM-MIC-00	12-core MPO(female)single-mode G652D trunk fiber jumper,polarity B,LSZH,yellow	QSFP DD/ OSFP-400G-DR4
MPO/PC-MPO/PC-F-B-0-8-3.0-OM3-LSZH-aM-MIC-00	8-core MPO(female)multimode OM3 trunk fiber jumper,polarity B,LSZH,aqua	QSFP DD/ OSFP-400G-SR4.2 QSFP DD/ OSFP-400G-Bidi4.2
MPO/PC-MPO/PC-F-B-0-12-3.0-OM3-LSZH-aM-MIC-00	12-core MPO(female)multimode OM3 trunk fiber jumper,polarity B,LSZH,aqua	QSFP DD/ OSFP-400G-SR4.2 QSFP DD/ OSFP-400G-Bidi4.2
MPO/PC-MPO/PC-F-B-0-8-3.0-OM4-LSZH-aM-MIC-00	8-core MPO(female)multimode OM4 trunk fiber jumper,polarity B,LSZH,purple	QSFP DD/ OSFP-400G-SR4.2 QSFP DD/ OSFP-400G-Bidi4.2
MPO/PC-MPO/PC-F-B-0-12-3.0-OM4-LSZH-aM-MIC-00	12-core MPO(female)multimode OM4 trunk fiber jumper,polarity B,LSZH,rose purple	QSFP DD/ OSFP-400G-SR4.2 QSFP DD/ OSFP-400G-Bidi4.2
MPO/PC-MPO/PC-F-B-0-16-3.0-OM3-LSZH-aM-MIC-00	16-core MPO(female)multimode OM3 trunk fiber jumper,polarity B,LSZH,aqua	QSFP DD/ OSFP-400G-SR8
MPO/PC-MPO/PC-F-B-0-24-3.0-OM3-LSZH-aM-MIC-00	24-core MPO(female)multimode OM3 trunk fiber jumper,polarity B,LSZH,aqua	QSFP DD/ OSFP-400G-SR8
MPO/PC-MPO/PC-F-B-0-16-3.0-OM4-LSZH-aM-MIC-00	16-core MPO(female)multimode OM4 trunk fiber jumper,polarity B,LSZH,purple	QSFP DD/ OSFP-400G-SR8
MPO/PC-MPO/PC-F-B-0-24-3.0-OM4-LSZH-aM-MIC-00	24-core MPO(female)multimode OM4 trunk fiber jumper,polarity B,LSZH,purple	QSFP DD/ OSFP-400G-SR8
Note: 1."a"represents the length of the cable in meters		
For More Information: ModuleTek Limited Web: www.moduletek.com Email: sales@moduletek.com		

General Technical Specifications

Item		Unit	Parameter			
Optical fiber mode		–	SM(Standard)	SM(Elite/Low)	MM(Standard)	MM(Elite/Low)
Insertion Loss	Typical	dB	0.35	0.20	0.35	0.20
	Maximun	dB	0.75	0.35	0.60	0.35
Return Loss		dB	≥60 for APC (8 Angle Polish)		≥20 for PC/UPC	
		dB	≥50 for PC/UPC		–	
Male/Female		–	Male: With Pins, Female: Without Pins			
Tensile Strength		dB	≤0.3(Max 66N)			
Vibration		dB	≤0.3(10 ~ 55Hz)			
Temperature Cycle		dB	≤0.3 (-40 ~ 75°C, 21Cycles)			