

## DATA SHEET

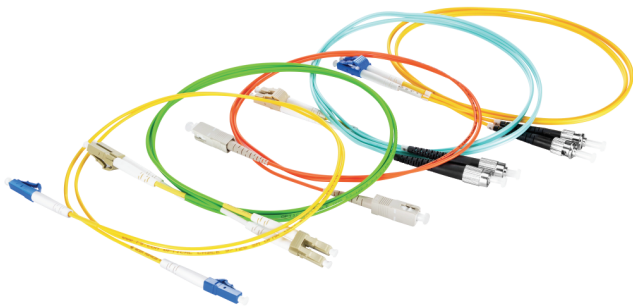
### MODULETEK: LC/PC-LC/PC-aaa-Φ2-LSZH-aM-D

#### Introduction

Optical fiber connector is a device for detachable(movable)connection between optical fiber and optical fiber.It precisely butts the two end faces of the optical fiber to minimize the loss caused to the optical link,so that the optical energy output by the optical fiber is emitted.Maximum coupling into the receiving fiber;The dual-core LC connector provided by MODULETEK has the advantages of easier insertion and removal,low insertion loss, and high compressive strength.

#### Product Features

High reliability,high stability  
Low insertion loss and high return loss  
Fiber end face: PC/UPC  
Full range of fiber optics available :  
SM(G652D);  
MM(OM2、OM3、OM4)



#### Applications

FTTX  
Optical fiber data transmission  
Local network,optical area network,cable TV  
Optical fiber data transmission test equipment and active device terminals

## Ordering Information

Part Number	Description	Cable color
LC/PC-LC/PC-G652D-Φ2-LSZH-aM-D	LC/PC-LC/PC Duplex single-mode G652D fiber jumper-2.0mm LSZH	Yellow
LC/PC-LC/PC-OM2-Φ2-LSZH-aM-D	LC/PC-LC/PC Duplex multimode OM2 fiber jumper-2.0mm LSZH	Orange
LC/PC-LC/PC-OM3-Φ2-LSZH-aM-D	LC/PC-LC/PC Duplex multimode OM3 fiber jumper-2.0mm LSZH	Aqua
LC/PC-LC/PC-OM4-Φ2-LSZH-aM-D	LC/PC-LC/PC Duplex multimode OM4 fiber jumper-2.0mm LSZH	Rose Red
<b>Note:</b> 1."a"represents the length of the cable in meters		
<b>For More Information:</b> ModuleTek Limited Web: <a href="http://www.moduletek.com">www.moduletek.com</a> Email: <a href="mailto:sales@moduletek.com">sales@moduletek.com</a>		

## General Technical Specifications

Item	Unit	Parameter		
Connector	–	FC, SC, ST, LC, MU		
Optical fiber mode	–	SM		MM
EndFace	–	PC/UPC	APC	PC/UPC
Insertion Loss	dB	≤0.3	≤0.3	≤0.3
Return Loss	dB	≥50	≥60	–
Cable Diameter	mm	Φ3, Φ2, Φ1.6, Φ0.9		
Vibration	dB	≤0.2 (5 ~ 50Hz, 1.5mm Amplitude)		
Temperature Cycle	dB	≤0.2 (-40 ~ 80°C, 21Cycle)		