

DATA SHEET

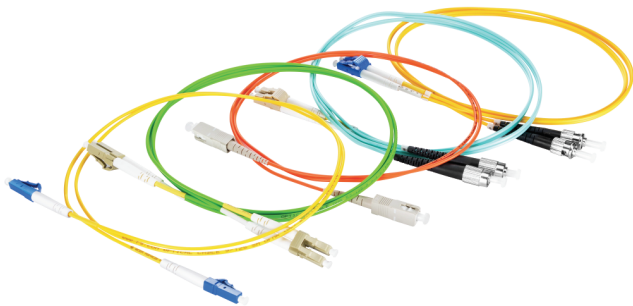
MODULETEK: SC/PC-LC/PC-aaa-Φ2-LSZH-aM-D

Introduction

Optical fiber connector is a device for detachable(movable)connection between optical fiber and optical fiber.It accurately butts the two end faces of the optical fiber to minimize the loss caused to the optical link,so as to transmit the optical energy output by the optical fiber.Can be coupled to the receiving fiber to the maximum extent;SC to LC dual-core connector provided by MODULETEK has the advantages of easier insertion and removal,low insertion loss,high compressive strength,etc.

Product Features

High reliability,high stability
Low insertion loss and high return loss
Fiber end face: PC/UPC
Full range of fiber optics available :
SM(G652D);
MM(OM2、OM3、OM4)



Applications

FTTX
Optical fiber data transmission
Local network,optical area network,cable TV
Optical fiber data transmission test equipment and active device terminals

Ordering Information

Part Number	Description	Cable color
SC/PC-LC/PC-G652D-Φ2-LSZH-aM-D	SC/PC-LC/PC Duplex single-mode G652D fiber jumper-2.0mm LSZH	Yellow
SC/PC-LC/PC-OM2-Φ2-LSZH-aM-D	SC/PC-LC/PC Duplex multimode OM2 fiber jumper-2.0mm LSZH	Orange
SC/PC-LC/PC-OM3-Φ2-LSZH-aM-D	SC/PC-LC/PC Duplex multimode OM3 fiber jumper-2.0mm LSZH	Aqua
SC/PC-LC/PC-OM4-Φ2-LSZH-aM-D	SC/PC-LC/PC Duplex multimode OM4 fiber jumper-2.0mm LSZH	Rose Red
Note: 1."a"represents the length of the cable in meters		
For More Information: ModuleTek Limited Web: www.moduletek.com Email: sales@moduletek.com		

General Technical Specifications

Item	Unit	Parameter		
Connector	–	FC, SC, ST, LC, MU		
Optical fiber mode	–	SM		MM
EndFace	–	PC/UPC	APC	PC/UPC
Insertion Loss	dB	≤0.3	≤0.3	≤0.3
Return Loss	dB	≥50	≥60	–
Cable Diameter	mm	Φ3, Φ2, Φ1.6, Φ0.9		
Vibration	dB	≤0.2 (5 ~ 50Hz, 1.5mm Amplitude)		
Temperature Cycle	dB	≤0.2 (-40 ~ 80°C, 21Cycle)		