

## DATE SHEET

### MODULETEK: MT2010-DWDM-MUXxx

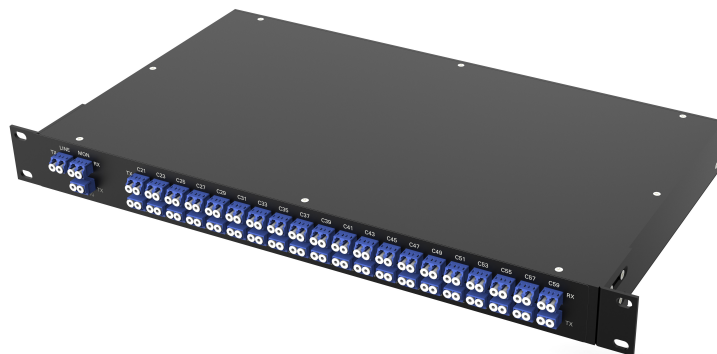
#### Overview

MT2010 DWDM series dense wavelength division multiplexer is a low-cost WDM transmission scheme. Its optional wavelength meets the ITU 100G Channel standard, and the channel spacing is 0.8nm. It utilizes the low loss and high bandwidth characteristics of single-mode optical fiber to couple different wavelengths of light into a single fiber for transmission, effectively improving the utilization of optical fiber and reducing the network operation cost.

The MT2010-DWDM-MUXxx series has the advantages of low insertion loss, high isolation, stable performance, and simple use. It is a 19-inch 1U chassis, which can be easily installed in a conventional cabinet. According to the needs, three special channels can also be selected, namely, direct channel, monitoring channel, and 1310 channel. The direct channel can be used to further expand the network bandwidth; The monitoring channel can be used to monitor the optical power of the service port; 1310 channel can be used for traditional 1310nm 1G/10G/40G/100G rate signal transmission.

#### Product Features

- Low insertion loss
- High isolation
- Working wavelength width
- High reliability and stability
- No glue in optical path
- Dual LC/UPC interface
- 1U chassis



#### Applications

- Electric communication
- Campus network
- Enterprise network
- MAN and access network
- WDM system
- Cable TV network

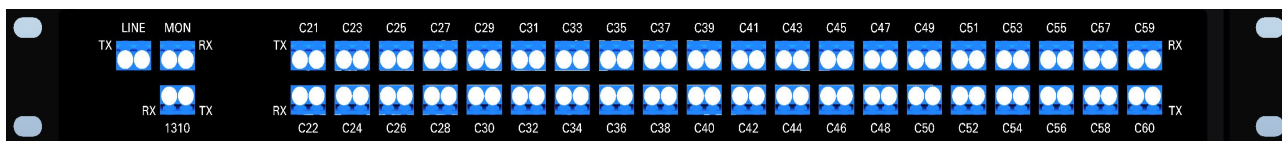
## Ordering Information

Part Number	Description
MT2010-DWDM-MUXxx-CHyy-CHzz-Options-00	DWDM,xx is the number of product channels,yy、zz are customized continuous channel wavelength range,00 is the version number,channel wavelength meets ITU 100G Channel standard, channel spacing 0.8nm, dual-fiber LC interface, 19-inch 1U chassis
<b>Notes:</b> 1.The "xx" in the "- MUXxx" in the product model is the number of channels of the product, which can generally be taken as 4, 8, 16, and 40, representing 4, 8, 16, and 40 channel dense wavelength division multiplexers. 2."- Options" in the product model are optional functions of the product,including M(power monitoring),P(pass-through port),and G(1310 channel port).Users can mark the required optional functions in the product model, for example:MT2010-DWDM-MUX40-CH21-CH60-MG-00,which is a 40-channel dense wavelength division multiplexer with operating channels from CH21 to CH60, and supports two optional functions of power monitoring,and 1310 channel;If you do not need any optional functions,please ignore the "- Options" part in the product model, for example:MT2010-DWDM-MUX40-CH21-CH60-00.	
<b>For more information or to order the above products, please contact:</b> E-mail: sales_cn@moduletek.com	

## General Product Specifications

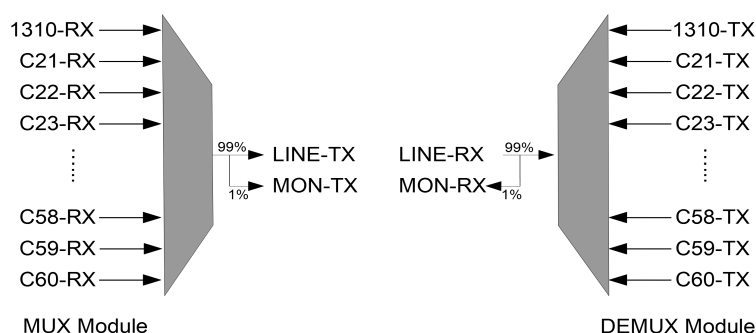
Parameter	Unit	DWDM Module					
Number Of Channels	CH	2	4	6	8	16	40
Working Wavelength	nm	1520 ~ 1620					
Transmission Broadband	GHz	100					
Insertion Loss	dB	≤1.0	≤1.5	≤2.0	≤2.5	≤3.5	≤5.0(AWG)
Adjacent Channel Isolation	dB	≥30					≥25
Non-Adjacent Channel Isolation	dB	≥40					≥29
Return Loss	dB	≥45					≥40
Directivity	dB	≥45					≥40
Package Size	mm	19" Rack					
Working Temperature	°C	-5 ~ 75					
Storage Temperature	°C	-40 ~ 85					

## Front Panel



Note: The figure above shows the front panel of MT2010-DWDM-MUX40-CH21-CH60-MG-00.

## Wiring Diagram



Note: The above figure is the wiring diagram of MT2010-DWDM-MUX40-CH21-CH60-MG-00.

## Dimension (Unit: mm)

